



Top reasons to choose HPE Machine Learning Development Environment

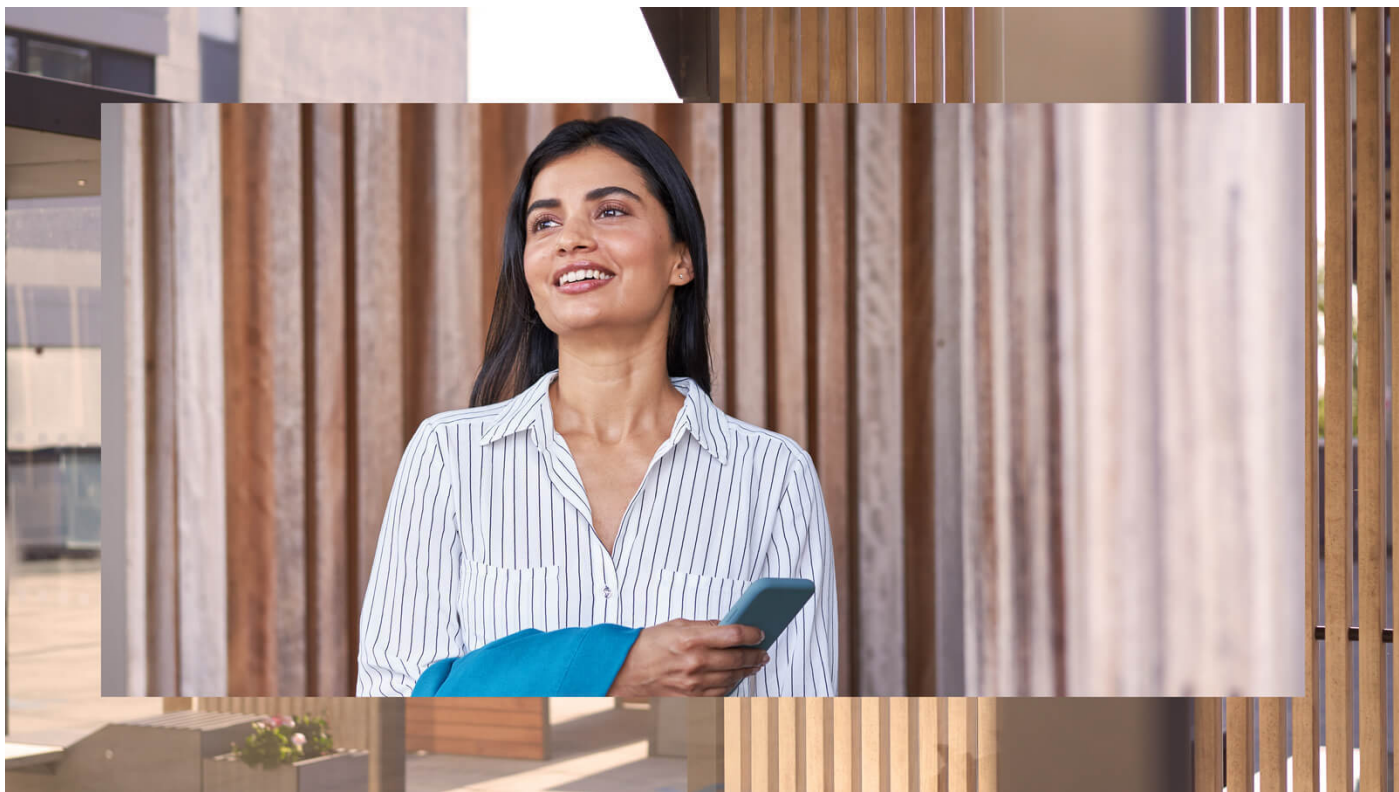
Artificial intelligence (AI) teams of machine learning (ML) engineers and data scientists constantly search for new solutions that will enable them to focus better on innovation and accelerate the time to production of their AI solutions.

The teams face challenges around how to build more accurate models and train them faster, manage their infrastructure costs, and track and reproduce experiments. HPE Machine Learning Development Environment tackles these challenges by removing the complexity and cost associated with ML model development. This comprehensive platform speeds time to value for AI model developers, brings faster time to market by dramatically increasing productivity, enhances data science collaboration, and reduces costs.



Let's see how HPE Machine Learning Development Environment is helping engineers and data scientists collaborate and train ML models at the enterprise scale:

- **Train models faster:** Allows ML engineers to train models faster using distributed training without changing their model code, which enables teams to train at any scale while managing the provisioning of machines, networking, data loading, and fault tolerance. HPE Machine Learning Development Environment makes distributed model training fast and easy, along with state-of-the-art tuning algorithms and hyperparameter search visualizations that reduce the time and cost needed to find better models.
- **Remove complexity and cost:** Enables ML model developers to accelerate time to value by making it easier for IT admins to set up, manage, secure, and share AI compute clusters. This helps developers get more from their GPUs with smart scheduling and reduces cloud GPU costs by seamlessly using spot instances.
- **Enhance data science collaboration:** Facilitates easier and faster ML team collaboration with simpler model reproducibility and experiment tracking features. So, teams can now easily interpret experiment results, reproduce experiments with artifact tracking, and deploy models using a built-in model registry from HPE Machine Learning Development Environment.
- **Flexible AI infrastructure support:** Gives companies broad infrastructure flexibility, letting it run on several compute environments such as cloud and on-premises AI infrastructure. The platform is also available as a turnkey solution to further accelerate AI modeling initiatives. This purpose-built, validated, and preconfigured solution delivers integrated hardware, software, and services ready for model development and training from day one.



With a comprehensive array of features integrated into the easy-to-use, high-performance HPE Machine Learning Development Environment, ML engineers can focus on building better models instead of managing IT infrastructure. ML engineers get what they need right from the start—a fast and easy way to build ML models.

Learn more at

[HPE.com/us/en/solutions/artificial-intelligence/
machine-learning-development-environment.html](https://hpe.com/us/en/solutions/artificial-intelligence/machine-learning-development-environment.html)

Visit **HPE GreenLake**



Chat now (sales)